

OUR FAMILY FOREST

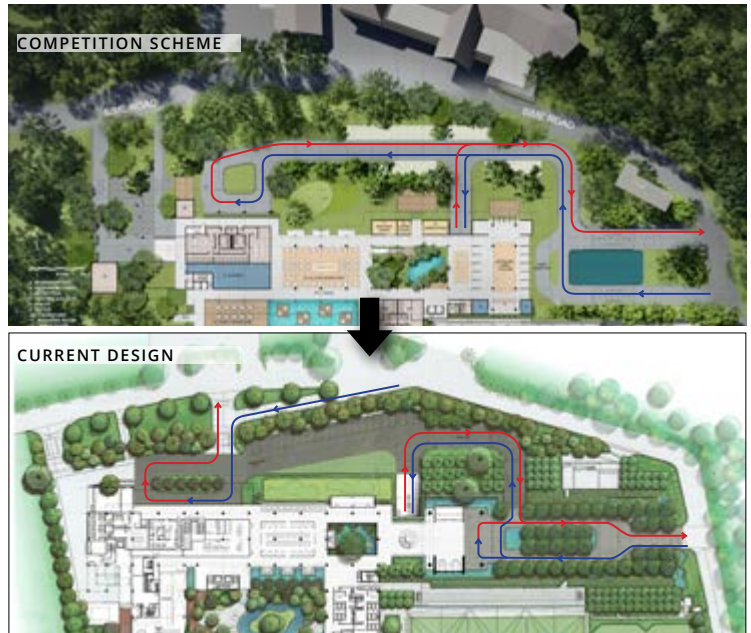
BY DP ARCHITECTS



DESIGN ENHANCEMENT: DEDICATED DROP-OFFS

In the design presented during the competition stage, a single access point for the site was planned to access two drop-offs: the main drop-off and a secondary drop-off for golfers and for the multi-purpose room.

In the course of design development, a new slip road and separate access point for the secondary drop-off was planned to enhance the arrival experience and reduce likelihood of traffic congestion at the main dropoff during peak period.





DESIGN ENHANCEMENT: MULTI-GENERATION POOL DECK EXPERIENCE

Based on overall landscape surface area, the current landscape design shows a slight 2.4% increase in area compared to the competition scheme.

Based on the number of facilities, the quantity and range of facilities has been expanded from 6 to 16. There are more pools with different depths and integrated water features for different usages and various demographics :

- The walking pool specially for the mature demographic;
- The lap swimming area for intensive exercise;

- The quiet Jacuzzi area for repose;
- Various children's play pools.

There is significant increase in tree planting at the pool deck to provide well-shaded spaces for user comfort in this hot climate. This reinforces the competition concept of "Our Family Forest". Hence the landscape design introduces a resort character to the Club with a series of organic terraces, sinuous pools, alfresco facilities, lush planting, kid's play areas and multi-purpose decks for a rich all-in-one experience.



LEGEND

- | | |
|--|-------------------------------------|
| 1. Raised Reflecting Pool | 7. Bubble Pool with Water Jets |
| 2. River Lounge Pool
(1m Water Depth) | 8. Water Necklace |
| 3. Jacuzzi Pool
(0.9m Water Depth) | 9. Parents' Supervision Deck |
| 4. Lap Pool
(1.2m Water Depth) | 10. Play Area |
| 5. Kid's Pool
(0.5m Water Depth) | 11. Sunken Hammock Deck |
| 6. Kid's Pool
(0.5m Water Depth) | 12. Pool Deck |
| | 13. Alfresco Dining Deck |
| | 14. Multipurpose Deck |
| | 15. Hydrotherapy-jets in River Pool |
| | 16. Sunning Lawn |



GYM OVERLOOKING SWIMMING POOL
Artist's impression

DESIGN ENHANCEMENT: CLUB ROOMS AND COURTYARD

In the competition scheme, the lifts were designed in an enclosed lobby and the courtyard was on the second storey. As the design was developed with PRC2, the club rooms were shifted from the 2nd storey to the 1st storey carpark for greater privacy based on comments received. The landscaped courtyard was lowered to the 1st storey to bring light and ventilation into the carpark and the club rooms. The lifts are now located in the courtyard and changed to a glass lift design overlooking the landscape area as part of the enhancement to members' experience.



DESIGN ENHANCEMENT: MINGLE @ BUKIT

A multi-generation co-working space located at the 3rd storey brings together the co-working, theatrette and boardrooms proposed in the competition into one space with a more flexible and efficient layout.

The open plan layout allows the space to be retrofitted to the club's evolving needs. Mingle@ Bukit facilitates multi-generation usage by bringing together a community of future innovators and members of all ages to work, collaborate and share ideas within a cosy workplace surrounded by lush greenery.

DESIGN ENHANCEMENT: SQUASH COURT AND VIEWING GALLERY

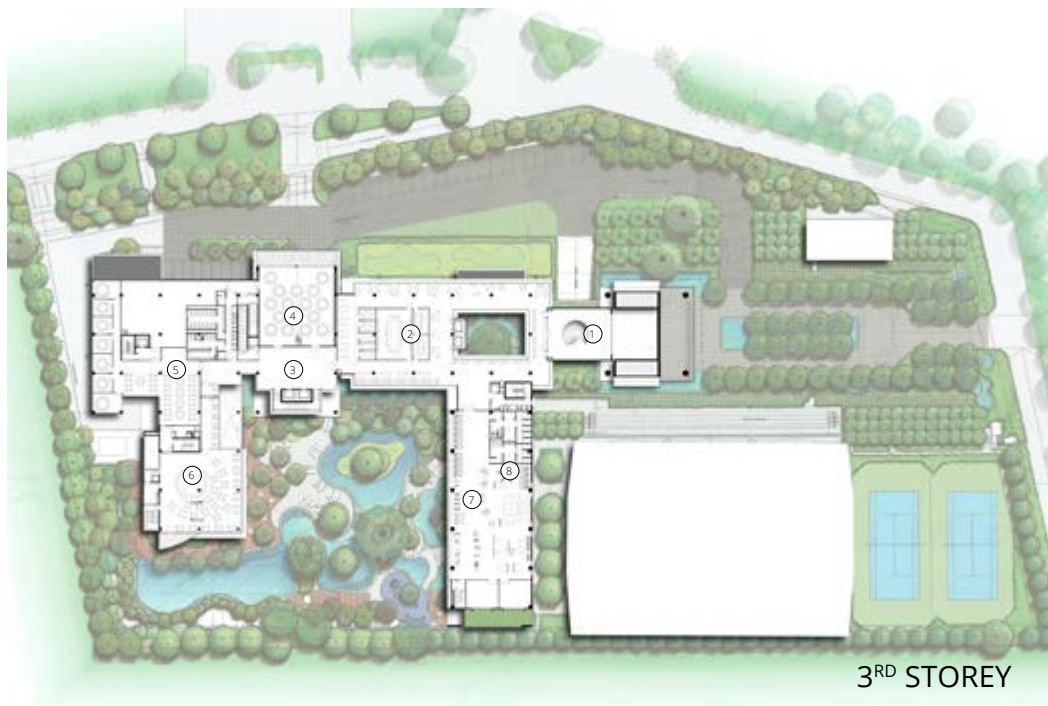
During the competition stage, four singles squash courts were provided in the design. Following feedback from the T&S Committee during the design development, one of the singles court was changed to a jumbo doubles court. Revisions to the design were also made to provide for a larger viewing gallery. This has increased the floor area and the floor height to cater for the increased height clearance required for the court.



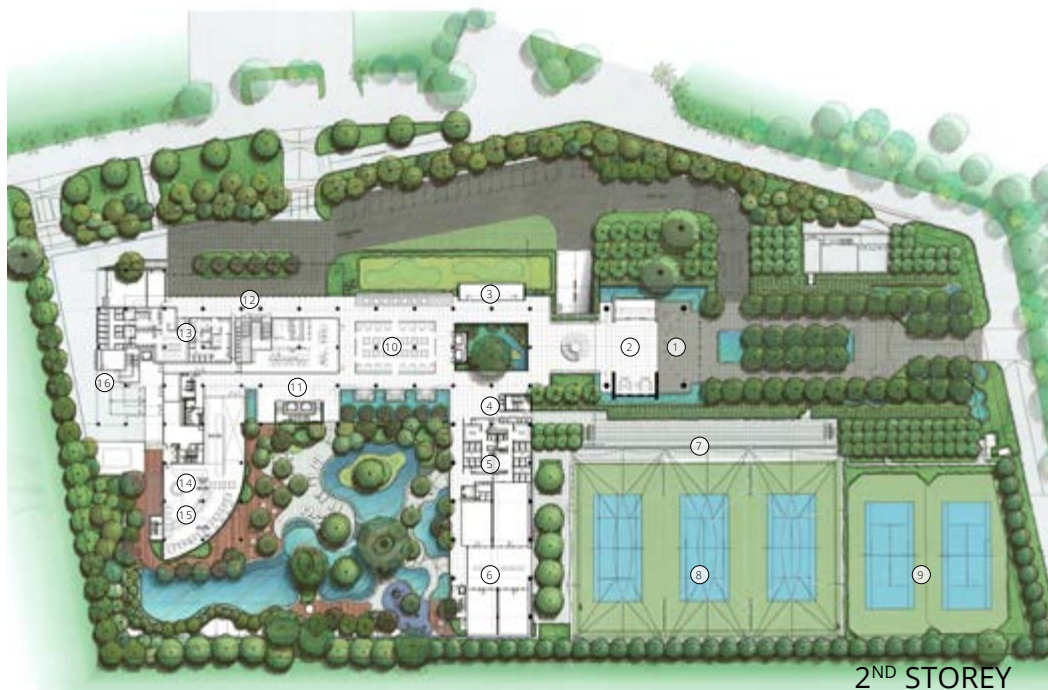
DESIGN ENHANCEMENT: ENLARGED GYM FACILITIES

During design development, provision of dedicated changing rooms was added and larger area for the gym was catered for as requested from the feedback gathered from sub-committees and members' dialogue.

1. ENTRANCE GALLERY
2. MINGLE @ BUKIT
3. LOBBY
4. MULTI-FUNCTION ROOM
5. CHINESE RESTAURANT
6. CLUB BAR
7. GYM
8. YOGA STUDIO



1. MAIN DROP-OFF
2. ENTRANCE PAVILION
3. BAKERY
4. SPORTS RECEPTION
5. CHANGING ROOM
6. SQUASH COURTS
7. VIEWING TERRACE
8. COVERED TENNIS COURTS
9. OPEN TENNIS COURTS
10. ALL-DAY DINING
11. LIFT LOBBY/GALLERY
12. GOLFERS' DROP-OFF
13. GOLFERS' CHANGING ROOM
14. SPORTS BAR
15. THEME RESTAURANT
16. LOADING BAY



1. LIFT LOBBY
2. CARD & GAMES ROOM



COMPARISON OF EXISTING AND PROPOSED KEY FACILITIES

	FACILITIES	EXISTING BUKIT CLUBHOUSE, SWIMMING COMPLEX AND TENNIS & SQUASH COMPLEX	COMPETITION OPTION 2 "OUR FAMILY FOREST" BY DP ARCHITECTS (APR 2019)	"OUR FAMILY FOREST" BY DP ARCHITECTS (JAN 2020 MEMBERS DIALOGUE)	"OUR FAMILY FOREST" BY DP ARCHITECTS (CURRENT)
SPORTS	PRO SHOP (m²)	190	NOT AVAILABLE	NOT AVAILABLE	NOT AVAILABLE
	GOLF OFFICE (m²)	129	50	35	35
	TENNIS COURT	3 COVERED 4 OPEN 1 PRACTICE	3 COVERED 2 OPEN	3 COVERED 2 OPEN	3 COVERED 2 OPEN
	SQUASH COURT	3 SINGLES 1 JUMBO DOUBLES	3 SINGLES 1 DOUBLES	3 SINGLES 1 JUMBO DOUBLES	3 SINGLES 1 JUMBO DOUBLES
	SWIMMING POOLS (m²)	400	1000	1,000	1,000
LIFESTYLE	GYM (m²)	423	370	600	550
	AEROBICS ROOM (m²)	118	80	120	90
	MASSAGE AND CHIROPRACTOR ROOM (m²)	NOT AVAILABLE	NOT AVAILABLE	30	INCLUDED IN GYM
	RECEPTION / LOUNGE (m²)	136	400	400	400
	CARD ROOM (m²)	124	120	75	75
	MINGLE @ BUKIT (m²) (INCLUSIVE OF MEETING ROOMS - 150m²)	NOT AVAILABLE	200 (3 MEETING ROOMS)	700	850 (INCLUSIVE OF MEETING ROOMS/ SCREENING ROOM)
	I-LOUNGE / READING ROOM (m²) (WITHIN MINGLE @ BUKIT)	155	NOT AVAILABLE	70	INCLUDED IN MINGLE
F&B	AV ENTERTAINMENT / SCREENING ROOM (m²) (WITHIN MINGLE @ BUKIT)	261	240	60	INCLUDED IN MINGLE
	ALL DAY DINING (m²)	948	850 (300 SEATS)	530 (160 SEATS)	480 (160 SEATS)
	POOLSIDE CAFE (m²)	338	INCLUDED IN ALL-DAY DINING	INCLUDED IN ALL-DAY DINING	INCLUDED IN ALL-DAY DINING
	THEME RESTAURANT (m²)	NOT AVAILABLE	NOT AVAILABLE	160 (80 SEATS)	200 (80 SEATS)
	SPORTS BAR (m²)	NOT AVAILABLE	NOT AVAILABLE	150 (70 SEATS)	160 (70 SEATS)
	CHINESE RESTAURANT (m²)	372	550 (220 SEATS) 10 PRIVATE ROOMS	400 (170 SEATS INCL 7 PRIVATE ROOMS)	390 (170 SEATS INCL 7 PRIVATE ROOMS)
	CLUB BAR (m²)	70	120 (50 SEATS)	350 (120 SEATS)	350 (120 SEATS)
	JAPANESE RESTAURANT (m²)	331	NOT AVAILABLE	NOT AVAILABLE	NOT AVAILABLE
AMENITIES	MULTI-FUNCTION ROOM (m²)	213	600 (300 SEATS)	300 (160 SEATS)	300 (160 SEATS)
	BOARD ROOM / MEETING ROOM (m²)	118	60	INCLUDED IN MINGLE @ BUKIT	INCLUDED IN MINGLE @ BUKIT
	CARPARK LOTS	425	175	152 + 3 HANDICAP LOTS	150 + 3 HANDICAP LOTS